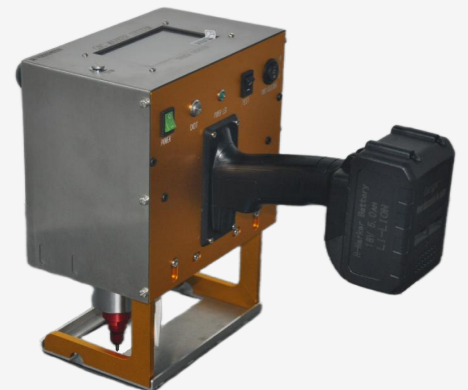




# HeatSign

The Science of Marking

Empower Precision  
Inspire Creation



## Portable VIN Number Marking Machine

**HS-PE02-BMAX**

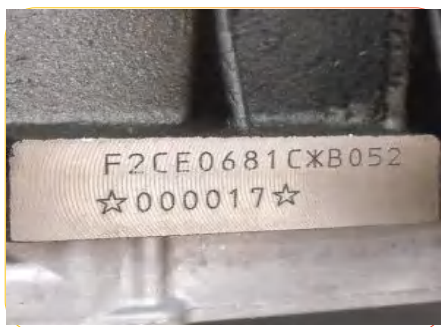
[www.heatsign.com](http://www.heatsign.com)

# Overview of VIN Number Marker

Our VIN number machine meets the automotive industry 's need for accurate, durable, and secure vehicle identification. It can engrave numbers, text, symbols, and VINs on metal materials with a marking range of 120 mm x 40 mm. This machine is small and easy to carry. It has a removable battery. New technology clearly marks each VIN on vehicles for better traceability and safety throughout their lifespan. The machine is our comprehensive solution for reliable and efficient VIN marking.

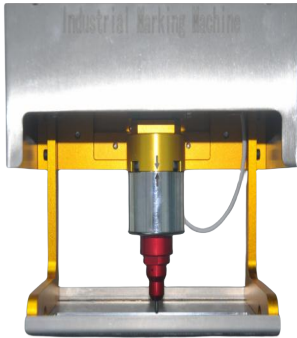


- Enhanced Marking Precision:**  
Provides accurate markings for complex designs.
- Depth for Durability:**  
Creates marks for effective long-term identification.
- Ease of Maintenance:**  
Designed for simplicity, requiring minimal upkeep.
- Robust for Tough Environments:**  
Engineered for resilience in challenging industrial conditions.
- Versatile Application Range:**  
Well-suited for multiple sectors, such as automotive, aerospace, and general manufacturing.



***At HeatSign, we're not just offering a product, but a commitment to precision and innovation in marking solutions.***

# Features & Benefits



## Precise & Clear Marking:

Delivers sharp, accurate marks essential for product identification and tracking.



## Durable Markings:

Ensures long-lasting, traceable marks, reducing the need for re-marking.



## Specialized Task Efficiency:

Ideal for tasks like VIN and chassis punching, streamlining processes.



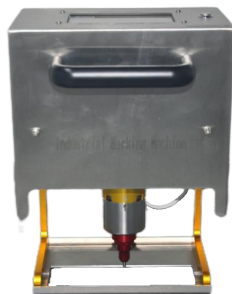
## User-Friendly Operation:

Simple to operate for all skill levels, minimizing training requirements.



## Versatile Marking Capability:

Flexible for different marking tasks, from detailed to robust applications.



## Cost-Effective in the Long Run:

Durable construction and low maintenance lead to significant cost savings.



## Reliable Performance:

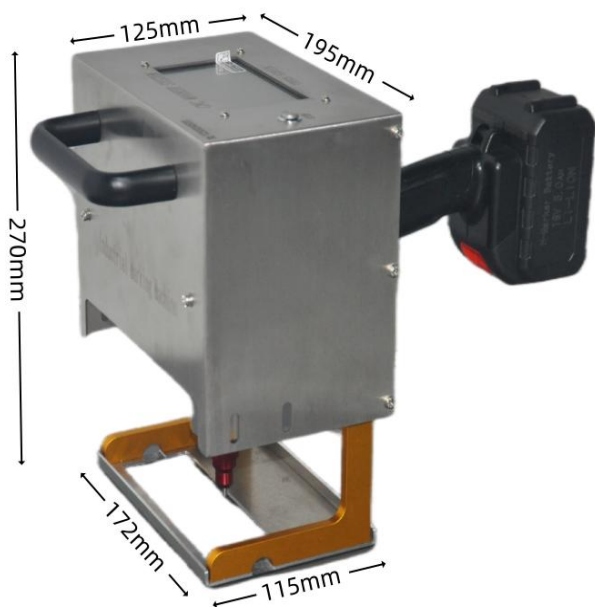
Consistently dependable in various conditions, ensuring smooth operations.



**These features offer a reliable, efficient, and cost-effective solution for your marking and engraving needs.**

# Machine Specification

Type of Marking Machine	Portable Dot Pin Marker
Controller	Built-In Software and Touch Screen
Standard Marking Area	120mm x 40mm
Optional Marking Areas	90mm x 30mm ( HS-PE02 )
Base Support	Electromagnetic basement
Marking Speed	32-42mm/s
Impact Frequency	30 times/s
Warranty of core components	1 year
Preciseon Repeatability	0.01mm
Marking Depth	0.05mm~0.5mm ( depends on your material )
Battery Capacity	Work continuously for 4 hours on a full charge
Air Power Request	No need
Engraving Content	Text, Logos, Dot Matrix, Circle Letters, Serial Numbers, etc.
Humidity:	0-80% (Non-condensing)
Temperature:	From 0 to 40 Centigrade Degree



# Machine Applications

HeatSign's portable Vin Number Marking Machines play a pivotal role in ensuring the traceability, compliance, and safety of products across a wide range of industries. Here's how they contribute to each sector:



🔥 **Automotive Manufacturing:** Marks VINs on car parts for identification during manufacturing, aiding in tracking and compliance.



🔥 **Motorcycle Frame Number Marking:** Assigns unique numbers to motorcycles for theft prevention, maintenance tracking, and regulatory compliance.



🔥 **Heavy Machinery:** Suitable for durable markings on large metal parts in tough conditions.



🔥 **Aerospace and Aviation:** Marks parts with unique IDs for traceability, safety, and compliance with aerospace standards.



🔥 **Energy Sector:** Ideal for etching codes and information on energy equipment like turbines and generators.



🔥 **Railway Equipment:** Marks identification and safety codes on railway components, crucial for maintenance and safety standards.



🔥 **Construction Equipment:** Useful for marking construction machinery, aiding in asset management and theft prevention.

## Accessories and Consumables



Marking Tube



Marking Pin



Touchscreen Pen



USB Flash Drive



Spanner



Power Adapter



***This machine is a versatile tool that caters to diverse marking and engraving needs across industries.***



# HeatSign

The Science of Marking

Tel: +86-85170177

Cell No: +86-15061477073

Email: [info@heatsign.com](mailto:info@heatsign.com)

Address: Room No. 903, Building D1, No.999  
GaoLang East Road, Binhu District, Wuxi City,  
Jiangsu, China

[www.heatsign.com](http://www.heatsign.com)